

# HIHAUS



**500+** Skilled workers



**16+years** Manufacture experience



**123,000m<sup>2</sup>** Factory production area

**GUANGZHOU HIHAUS BUILDING MATERIALS CO.,LTD**

Website: <https://www.hihausbm.com/>

Office address: 19th Floor, Central Plaza, Jianshe Road No.18, Yuexiu Guangzhou Guangdong China

Factory address: Xingye North Road, Hongsha Industrial Zone, Shishan Town, Nanhai District, Foshan

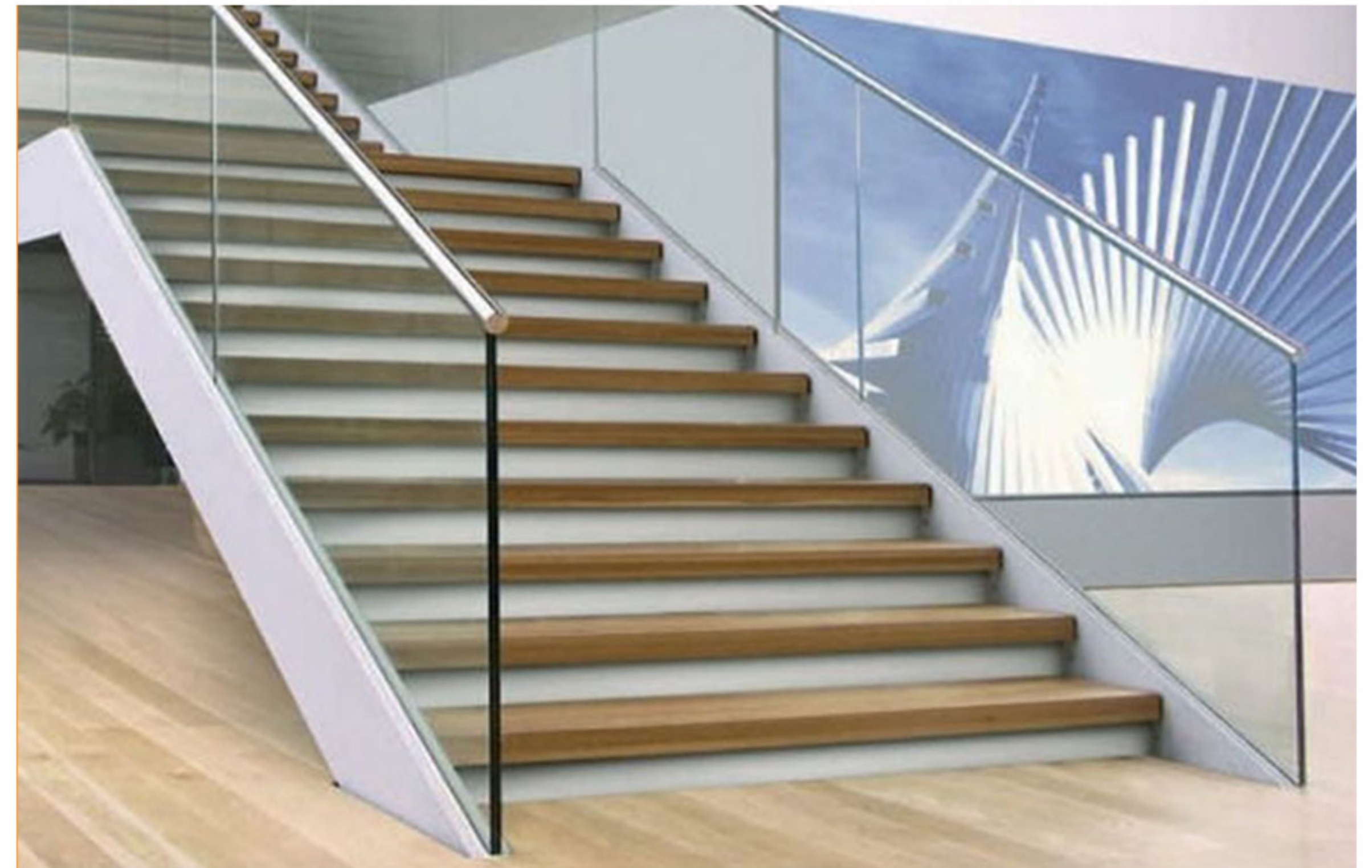
# HIHAUS

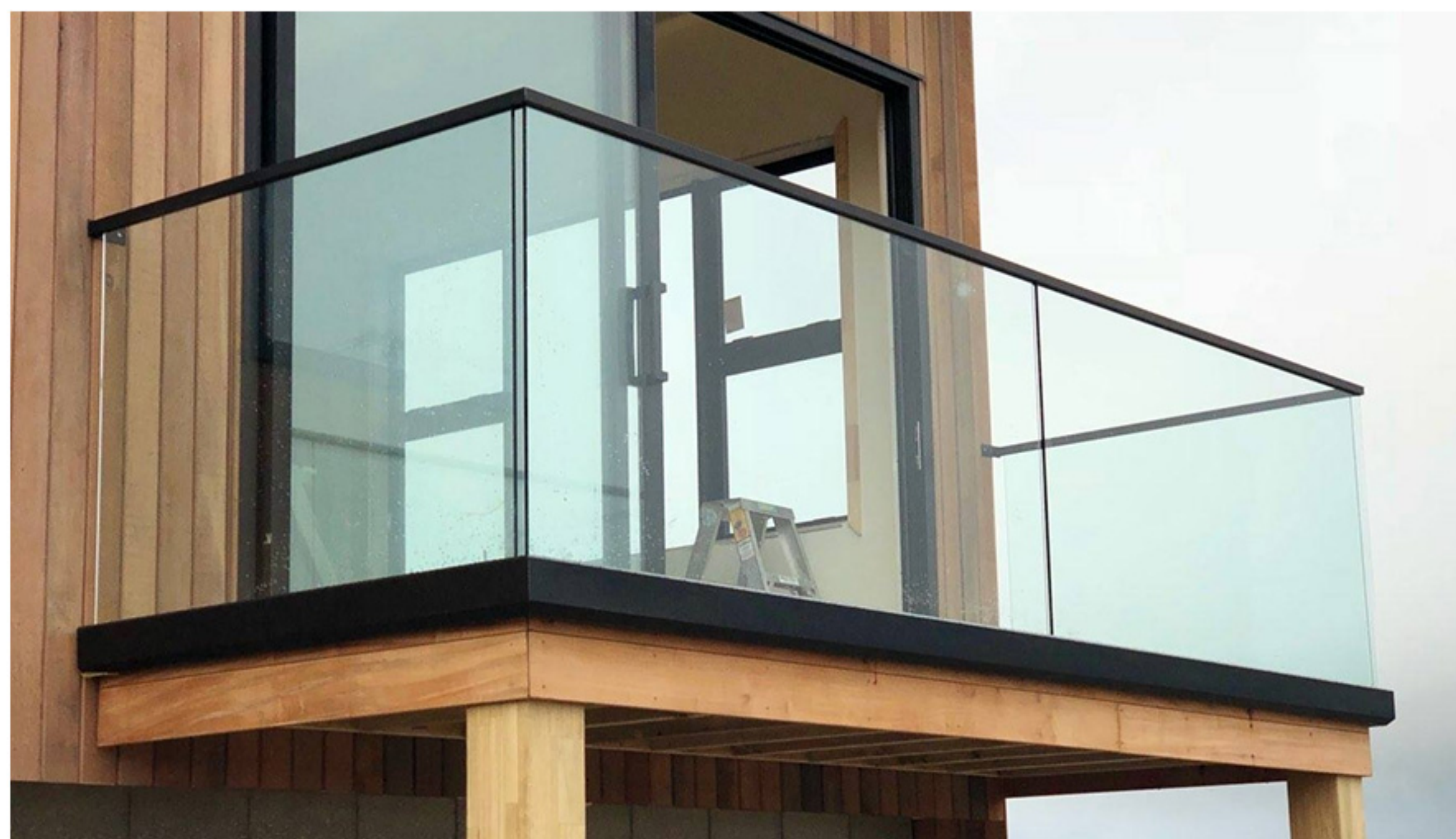
**HIGH-END WINDOWS AND DOORS SOLUTIONS  
FOR YOUR DREAM HOUSE!**

**GUANGZHOU HIHAUS BUILDING MATERIALS CO.,LTD.**

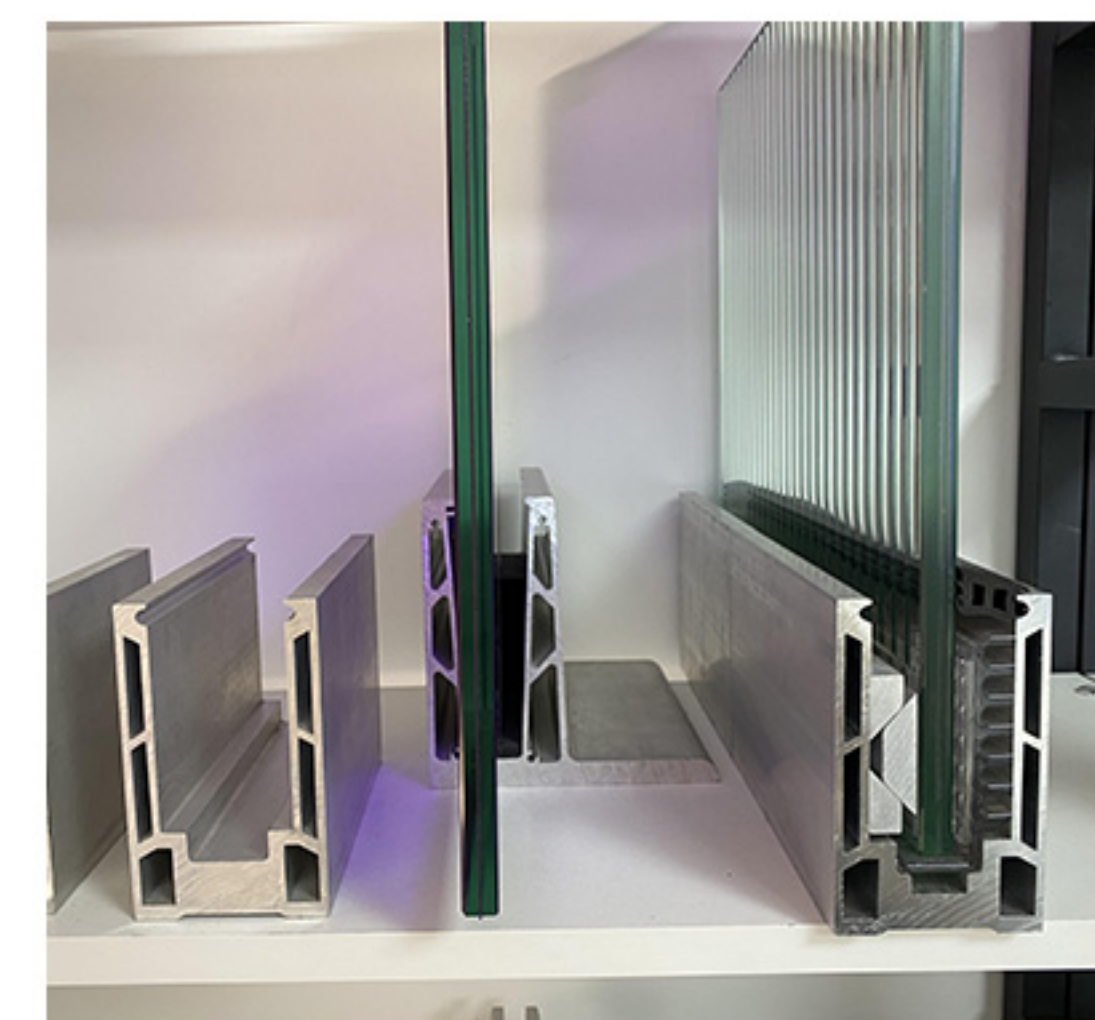
**HIHAUS HOT SALE PRODUCTS**  
**ALUMINUM U CHANNEL RAILING**

**HIHAUS**





Aluminum U channel railing	
<b>Size</b>	62*102mm,45*120mm,126*121mm, customized
<b>Glass thickness</b>	10~14mm (Single glass / Laminated glass)
<b>Surface finish</b>	1.profile blanks 2.profile blanks + stainless steel plate cover 3.Powder coated black color 4. Anodize silver / black color
<b>Fastener</b>	Adjustable/ non-adjustable , 3 pcs/meter
<b>Profile length</b>	3000mm or 6000mm
<b>Rubber</b>	EPDM





**Round spigot**

**Spigot high: 160 mm**  
**Base: 100 mm diameter**  
**Material: SS304 / 316**  
**Base thickness: 8 mm**



**Square spigot**

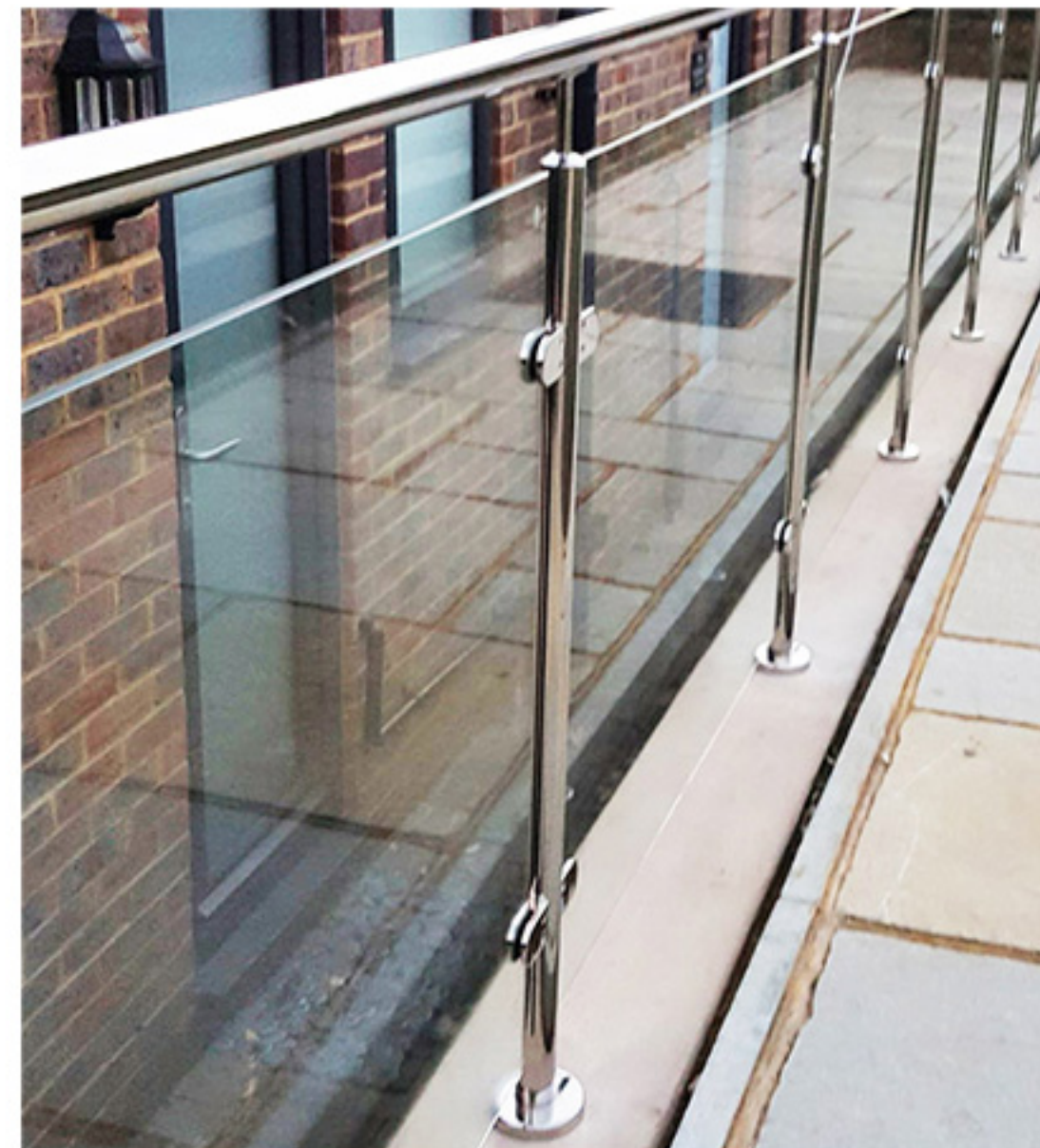
**Spigot high: 160 mm**  
**Base: 100 mm diameter**  
**Material: SS304 / 316**  
**Base thickness: 8 mm**





**Material:** SS304 / 316  
**Surfacefinsh:** mirror / satin /  
brush  
**PostHeight:** 900 mm / 1050 mm  
**Round post size:** 50.8 \* 2.0 mm  
thick  
**TopTube:** 50.8 \* 1.2mm thick  
**Glass:** 10 / 12 mm clear  
tempered glass

**Round post**



**Material:** SS304 / 316  
**Surfacefinsh:** mirror / satin /  
brush  
**PostHeight:** 900 mm / 1050 mm  
**Square post size:** 50 \* 50 \* 2.0  
mm thick  
**TopTube:** 50.8 \* 1.2mm thick  
**Glass:** 10 / 12 mm clear  
tempered glass



**Square post**

**HIHAUS HOT SALE PRODUCTS**  
**STAINLESS STEEL GLASS SPIDER BALUSTRADE**

**HIHAUS**



**SH-003**

**SH-004**

**SH-005**



**SH-001**  
**Single**  
**column**



**SH-002**  
**Double**  
**column**



